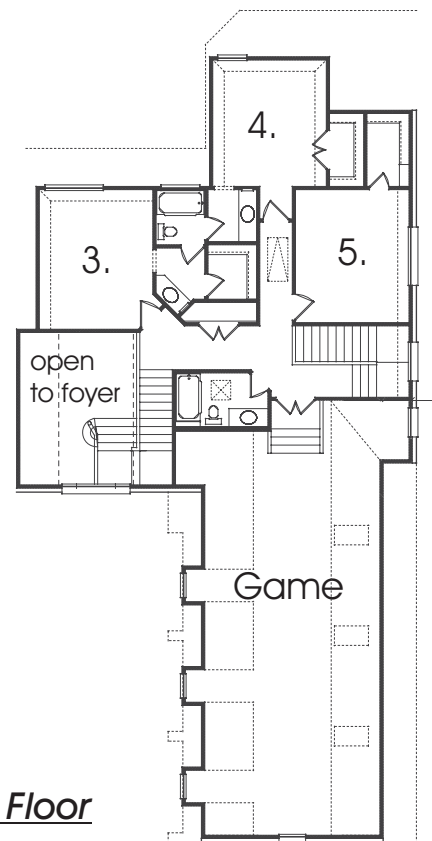


1st Floor



2nd Floor

The Douglas

A Game Room that goes on forever with many possible uses. The Family Room is large and looks out over the back yard. The formal Study can also serve as a Living Room. The exterior of stone and brick has old world charm.



creative architects

www.cr-ar.com

972-530-4872

Floor plans & elevations are subject to change and dimensions are approximate. Purchasers are advised consult their state and local building authorities and a state certified architect prior to any construction related to these plans.
© Copyright 2006

Specifications

1st floor	2,667
2nd floor	1,834

Total Living Area 4,501 Sq. Ft.

5 Bedrooms, 4 Baths, 2 Living Areas, Study
57'-10" Wide x 92'-6" Deep

1st Floor

- Study / Living Room 15'-2" x 11'-8"
- Family Room 20'-0" x 11'-10"
- Dining Room 12'-0" x 14'-2"
- Master Bedroom 16'-0" x 18'-0"
- Kitchen 13'-6" x 14'-0"
- Breakfast 13'-6" x 13'-6"
- Bedroom 2 11'-0" x 11'-8"

2nd Floor

- Bedroom #3 11'-8" x 15'-4"
- Bedroom #4 11'-8" x 13'-0"
- Bedroom #5 11'-8" x 13'-10"
- Game 18'-0" x 41'-0"