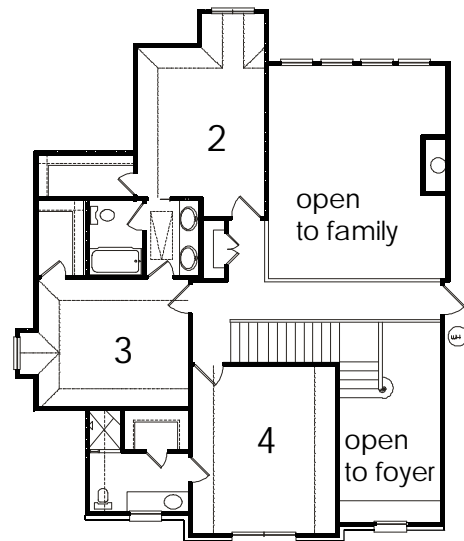


*1st Floor*



*2nd Floor*

## ***The Bridgewater***

This home is designed for a corner lot and features a cozy entry that opens to a dramatic 2 story foyer and family room. There is plenty of storage with walk-in closets in the bedrooms and extra closets throughout.

### **Specifications**

1st floor	2,828
2nd floor	1,048

**Total Living Area 3,876 Sq. Ft.**

4 Bedrooms, 4 Baths, 3 Living Areas  
67'-8" Wide x 78'-5" Deep

#### *1st Floor*

- Living Room 15'-8" x 12'-0"
- Family Room 16'-8" x 20'-0"
- Dining Room 13'-6" x 15'-8"
- Game Room 16'-10" x 21'-6"
- Kitchen 14'-0" x 14'-7"
- Breakfast 18'-0" x 9'-10"
- Office 8'-0" x 8'-4"

#### *2nd Floor*

- Bedroom #2 13'-6" x 15'-8"
- Bedroom #3 14'-1" x 12'-0"
- Bedroom #4 12'-0" x 14'-1"



Floor plans & elevations are subject to change and dimensions are approximate. Purchasers are advised consult their state and local building authorities and a state certified architect prior to any construction related to these plans.  
© Copyright 1998