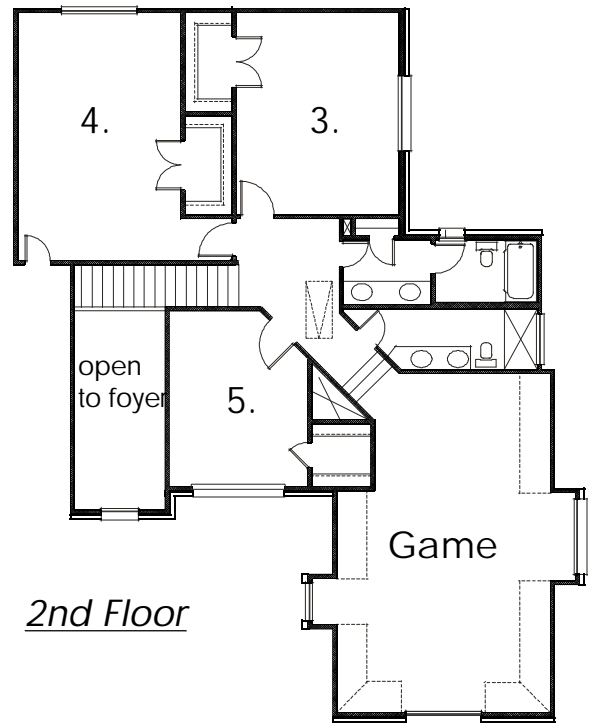


1st Floor



2nd Floor

## The Bamford

This 4,147 square foot home has space for everyone in the family. This design features large secondary bedrooms. The living can be a living, library or media room. The craft room and office are out of the way for privacy. The game room is large and tucked up over the garage.



Floor plans & elevations are subject to change and dimensions are approximate. Purchasers are advised consult their state and local building authorities and a state certified architect prior to any construction related to these plans.  
© Copyright 1998

### Specifications

1st floor	2,582
2nd floor	1,565
<hr/>	
<b>Total Living Area</b>	<b>4,147 Sq. Ft.</b>
5 Bedrooms, 4 1/2 Baths, 3 Living Areas	
66'-10" Wide x 66'-10" Deep	
<b>1st Floor</b>	
Living Room 13'-0" x 17'-0"	
Family Room 19'-0" x 19'-4"	
Dining Room 11'-0" x 13'-10"	
Master Bedroom 16'-8" x 13'-8"	
Kitchen 12'-8" x 14'-11"	
Breakfast 12'-8" x 10'-8"	
Office 10'-0" x 8'-0"	
Bedroom 2 12'-0" x 11'-10"	
Craft Room 10'-8" x 8'-0"	
<b>2nd Floor</b>	
Bedroom #3 13'-0" x 16'-0"	
Bedroom #4 13'-0" x 19'-9"	
Bedroom #5 11'-0" x 14'-0"	
Game Room 17'-0" x 27'-0"	