

Living Over the Workplace

“Live in Luxury, Work in Comfort”

“What’s old is new and what’s new is old”*Living Over the Store* is the old new concept being built at Capella Park. The team of Cris Buell Construction and **Creative Architects** are revitalizing the faded tradition of *Living Over the Workplace*. Shop keepers, artisans, and professionals have been *Living Over the Workplace* for hundreds of years.



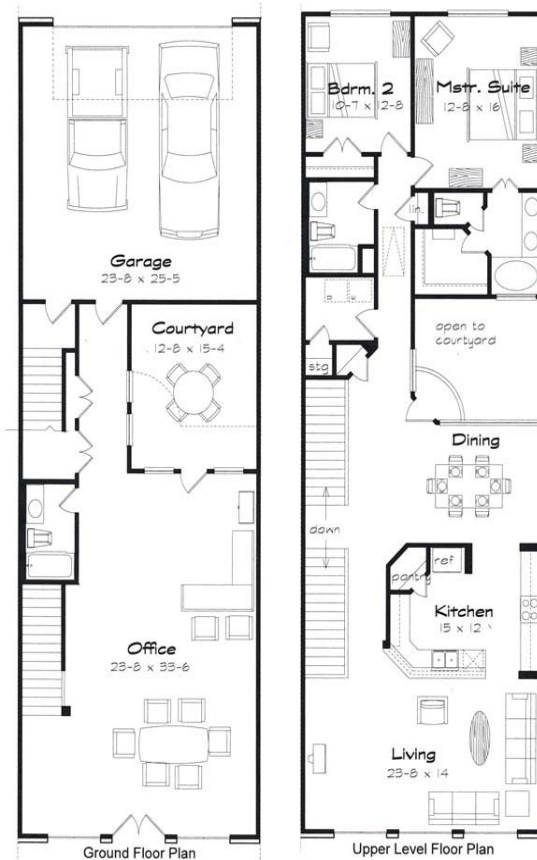
Live/Work homes allow small business owners to combine their housing and work spaces into one building and one mortgage. The combination of these required spaces present lower total occupancy expense and ease of identifying work space for tax deductibility. The Live/Work homes in Phase I of Capella Park are tailored to businesses which have no more than two outside employees and occasional drive-up clientele.

In days gone by people *Lived Over the Workplace* partially because transportation was difficult. Today, because of congested roads, transportation is again difficult. With the Internet and other modern marvels it is time for the old to be new again. *Living Over the Workplace* has many benefits. It’s convenient, more comfortable, more economical, environmentally friendly and promotes community interaction. By living where one works there is no commuting, less air pollution, less energy usage, and cars will last longer. A win-win all around.

for this project, has been *Living Under the Workplace* for eleven years and brings his insight and experience to the design.

The ground level has an over-sized two car garage in the back by the alley. The size of the garage allows for storage and a work bench. The front is a large workspace which can be customized to the needs of the owner. The 10’ ceilings and multiple French doors with transoms make the space bright and spacious. There is also an interior courtyard which lets more light and is perfect for breaks or a lunch outside.

The use of French doors in the front opening onto the street not only brings in light but allows window shopping and lets the outside in, thus the community and workspace interact visually. This design adds to the pedestrian aspect of the New Urbanism concept.



The lower level also has a full bath, storage and two sets of stairs leading to the second level. One stair is directly off the garage while the other comes down into the workplace. The upper level living area is a 1,600 square foot two bedroom home. As you get to the top of the stairs you are greeted by the openness and the view of the upper courtyard. The dining room overlooks the upper courtyard

and receives abundant light from the courtyard. The kitchen is full featured with a full appliance package, pantry and a raised bar at which your friends will congregate. The sink looks out to the living room and beyond to the outside.

The living room is at the front of the unit and has plenty of windows looking down to the street and across Capella Park. At almost 24 feet wide the space can accommodate the home owner's needs. There are two full furniture/TV walls to make furniture placement easy.

Heading back past the dining area and the upper courtyard is the hall leading to the utility room, guest bedroom, bathroom and master suite. The utility room has space for the new larger washers and dryers along with some storage. There is also a storage closet in the utility room. The guest bath is not the standard guest bath but is over six 1/2 feet wide so it is and feels more spacious. There is a linen closet right across the hall from the guest bath. The master suite includes a private bath and walk-in closet.

These *Living Over the Workplace* homes are unique even to Capella Park's New Urbanism design. Harris Real Estate Partners and C. R. Buell Construction offer the combination of livable designs and quality construction.



creativearchitects
www.creative-architect.com
scottr@cr-ar.com
972-530-4872